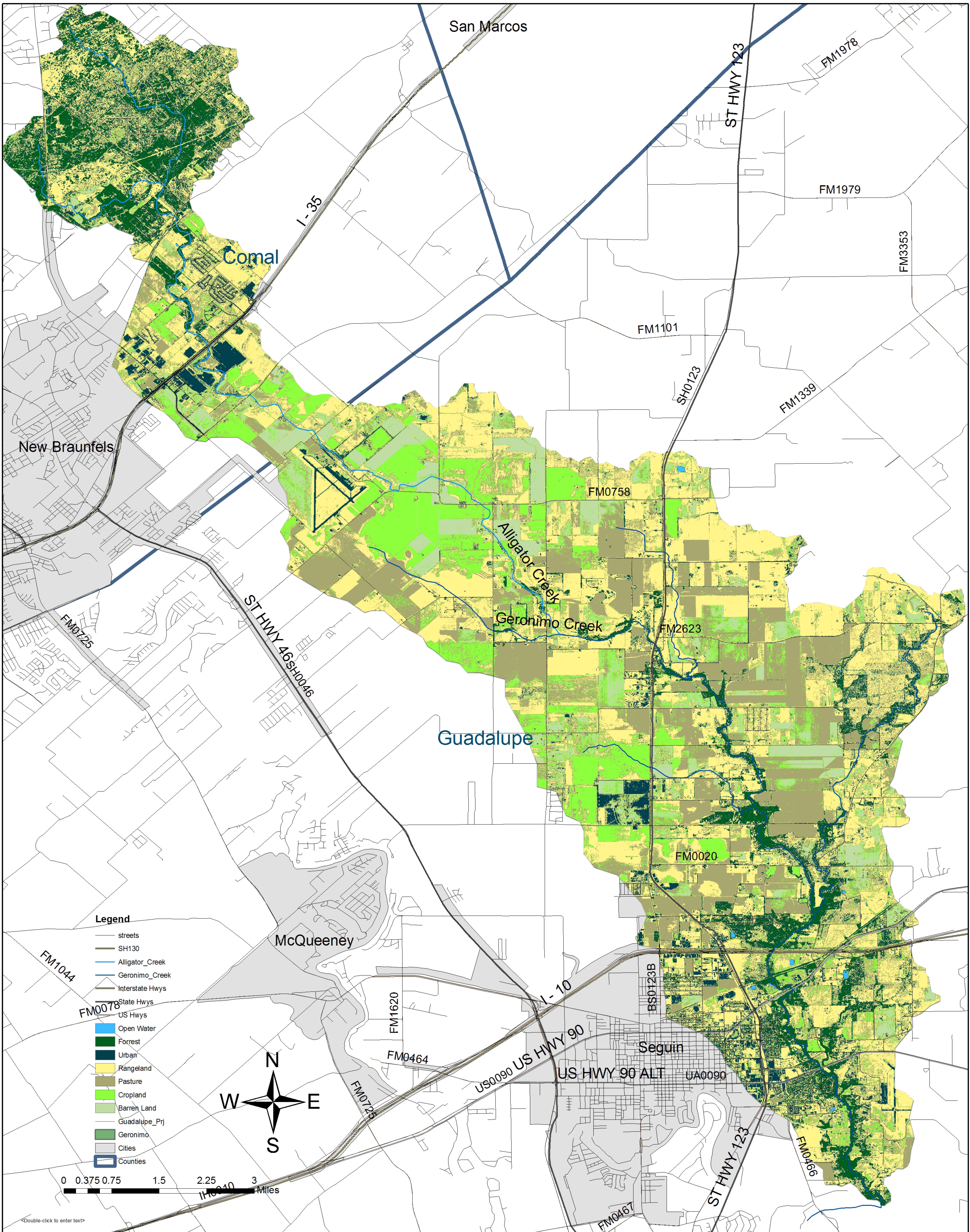


# Gerónimo and Alligator Creeks Watershed



## Legend

- streets
- SH130
- Alligator\_Creek
- Gerónimo\_Creek
- Interstate Hwys
- State Hwys
- US Hwys
- Open Water
- Forest
- Urban
- Rangeland
- Pasture
- Cropland
- Barren Land
- Guadalupe\_Prj
- Gerónimo
- Cities
- Counties

0 0.375 0.75 1.5 2.25 3 Miles

<Double-click to enter text>