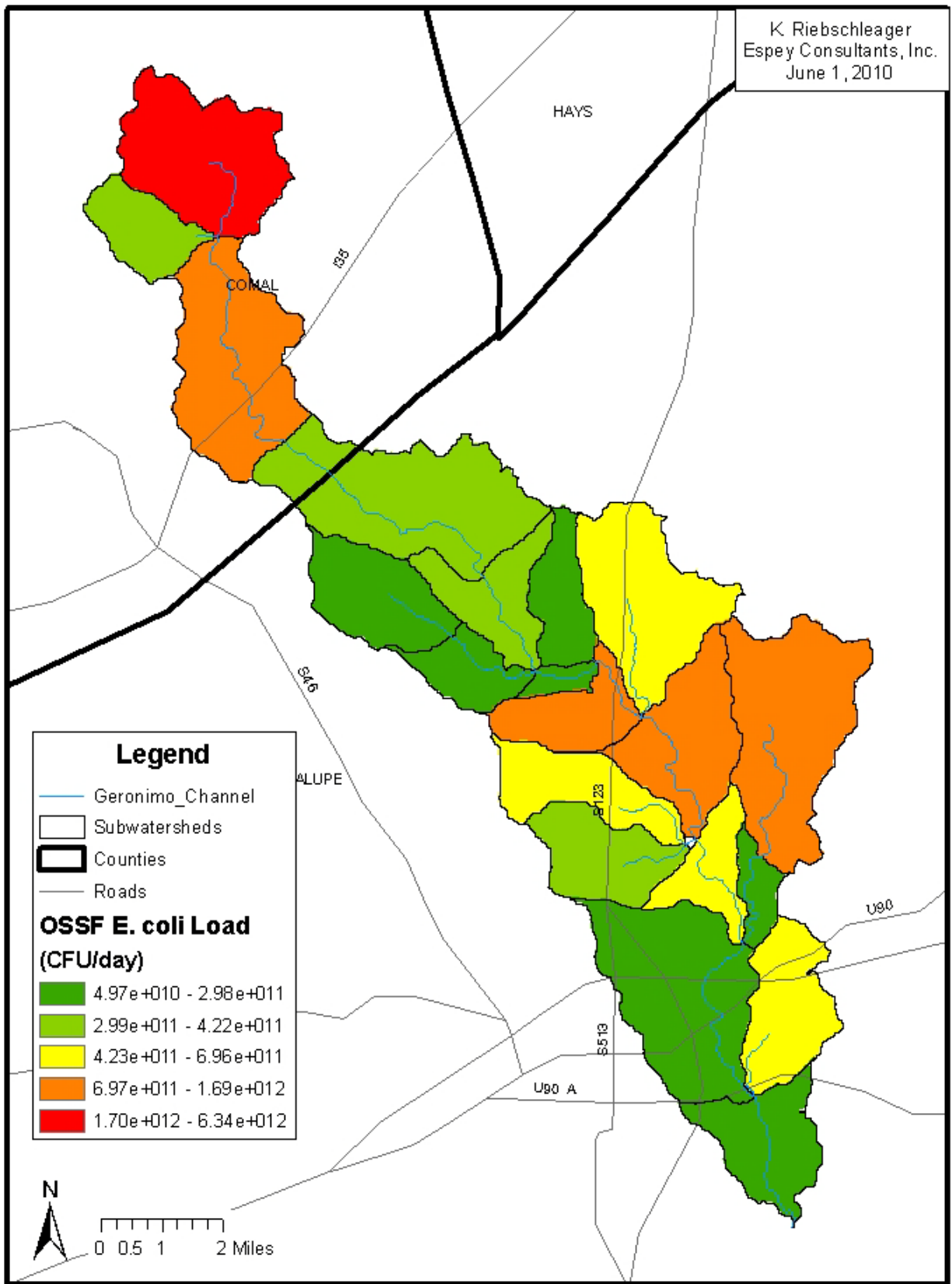


$$E.coli = OWTS * MalfunctionRate * \frac{10 \times 10^6 \text{ cfu}}{100 \text{ mL}} * \frac{210 \text{ gal}}{\text{household / day}}$$

$$* \frac{3785.4 \text{ mL}}{\text{gal}} * 0.63$$

K Riebschleager
Espey Consultants, Inc.
June 1, 2010



Legend

- Geronimo_Channel
- Subwatersheds
- ▭ Counties
- Roads

OSSF E. coli Load (CFU/day)

- Dark Green: 4.97e+010 - 2.98e+011
- Light Green: 2.99e+011 - 4.22e+011
- Yellow: 4.23e+011 - 6.96e+011
- Orange: 6.97e+011 - 1.69e+012
- Red: 1.70e+012 - 6.34e+012

