

A photograph of a stream flowing over large, light-colored rocks. A dragonfly is perched on a rock in the upper left. A trail of green footprints, each with a leaf on top, leads from the top left towards the bottom right. The text 'Taking Steps to Preserve Water Quality' is overlaid on the right side of the image.

Taking Steps to Preserve Water Quality

Let me
show you how



**Taking Steps
to Preserve**



Touch an item to begin:



**Water
Quality**

Learning About

**Guadalupe River
Basin**



**Non-Point
Source Pollution**

Watersheds

**Know Your Watershed:
Geronimo Creek**

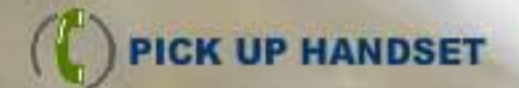
**Wastewater
Treatment Systems**

Taking Steps to Preserve



Water Quality

GUADALUPE RIVER BASIN



**TCEQ Continuous Monitoring
Data Website**



GBRA Website



**GBRA Clean Rivers Program
Website**

Water Quality Monitoring Video

This short film describes the varying levels of water quality monitoring that takes place in the Guadalupe River Basin. Volunteers and professionals alike strive to learn about our precious water resources.





TCEQ TEXAS COMMISSION ON ENVIRONMENTAL QUALITY

SITE SEARCH:

please enter search phrase

SUBJECT INDEX

> [Air](#) > [Water](#) > [Waste](#)

> [Search TCEQ Data](#)

> [Agency Organization Map](#)

[Air Quality Maps](#)

[Data Reports](#)

[AutoGC](#)

[Water Data](#)

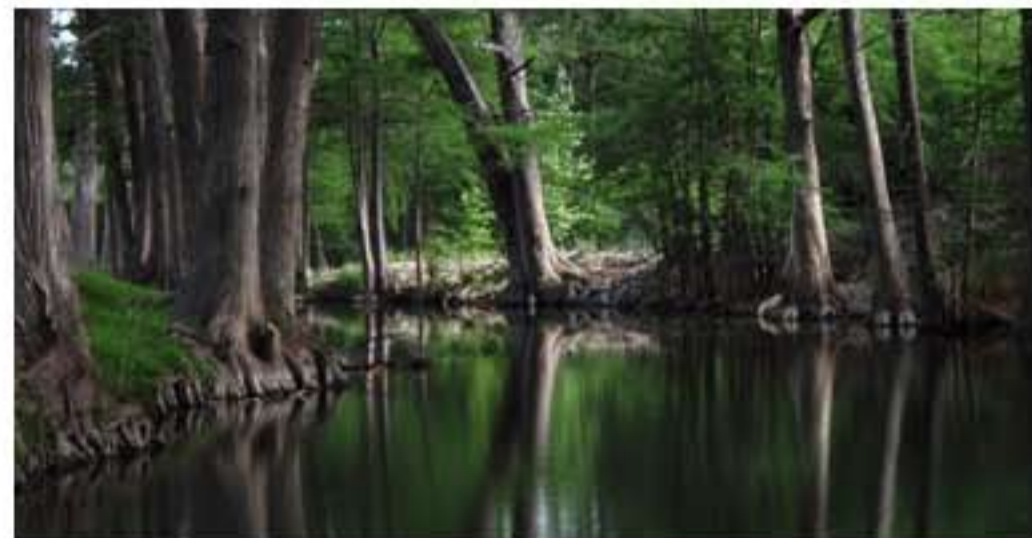
[Site Info](#)

Water Monitoring Site Information

Sort By Include Deactivated Sites

Show columns:	<input checked="" type="checkbox"/> Site Description	<input checked="" type="checkbox"/> Address	<input checked="" type="checkbox"/> City	<input type="checkbox"/> State	<input type="checkbox"/> County
		<input type="checkbox"/> Lat/Lon <input checked="" type="radio"/> DMS <input type="radio"/> Decimal	<input type="checkbox"/> Elevation <input checked="" type="radio"/> Ft <input type="radio"/> M	<input checked="" type="checkbox"/> River Basin	<input checked="" type="checkbox"/> Responsible Entity

CAMS	Site Description	Street Address	City	River Basin	Responsible Entity
787	Big Cypress Creek SH43 near Karnack C787	Left bank near boat ramp 5.7 upstream of SH43	Karnack	Cypress River	TCEQ Tyler Regional Office
749	Pine Island Bayou C749	End of Voth Road near Pump Station	Beaumont	Neches River	Lower Neches Valley Authority (LNVA)
771	W. Fk. San Jacinto Rv. at IH 45 C771	West Fork San Jacinto River ds IH 45	Conroe	San Jacinto River	USGS for H-GAC
772	W. Fk. San Jacinto Rv. at SH 105 C772	West Fork San Jacinto River up SH 105	Conroe	San Jacinto River	USGS for H-GAC
1771	W. Fk. San Jacinto Rv. at IH 45 C771	West Fork San Jacinto River ds IH 45	Conroe	San Jacinto River	USGS for H-GAC
1772	W. Fk. San Jacinto Rv. at SH 105 C772	West Fork San Jacinto River up SH 105	Conroe	San Jacinto River	USGS for H-GAC
761	Clear Creek at Mykawa Rd. C761	South of Sam Houston Parkway in Brookside Village	Brookshire Village	San Jacinto-Brazos Coastal	USGS for TCEQ
701	Green Creek Water Site C701	Green Creek	Clairette	Brazos River	Stephenville Special Project Office of the TCEQ DFW Regional Office
702	Clifton Water Site C702	Clifton	Clifton	Brazos River	Stephenville Special Project Office of the TCEQ DFW Regional Office
704	Resley Creek C704	1200 FM 2823	Dublin	Brazos River	Stephenville Special Project Office of the TCEQ DFW Regional Office
703	Lake Whitney C703	Shack Creek Park	Whitney	Brazos River	TCEQ West Regional Office



Featured Stories



Plum Creek Stewardship is Recognized Model

The Plum Creek Watershed Partnership works with citizens, businesses and officials in the watershed to restore the health of Plum Creek.



GBRA Earns Envision Central Texas Community Stewardship Award

Helping to lead an outstanding watershed partnership placed GBRA staff front and center recently to receive a community award.



Deadline Looms Over Long-Term Plan For Aquifer Species

Stakeholders continue working toward the goal of developing a longterm plan to protect species that depend on the Edwards Aquifer.

Latest News [+ more](#)

- 01.19.11** GBRA Directors Take Comments on Lake Wood Lease Changes
- 01.18.11** GBRA Directors Elect Kunde, Fogle and Marshall as 2011 Board Officers
- 01.13.11** Lake Wood (H-5) Lowering Extended Thru Jan 21 to Perform Routine Dam Maintenance
- 01.12.11** 150-Acre Easement Preserves Area Over Carrizo-Wilcox Recharge Zone
- 01.12.11** Conservation Easement Preserves more than 400 Acres of Wildlife Habitat

Downloads

- ↓ Whooping Crane Litigation Documents
- ↓ Kendall County and City of Fair Oaks Regional Water and Wastewater Planning Study
- ↓ GBRA Scholarship Program Guidelines
- ↓ GBRA Scholarship Program Application Form

Multimedia [+ more](#)



Protect, Conserve, Educate, Reclaim, Steward

Current Conditions [+ more](#)

J-17 Well	674.4 msl (+0.0)
Canyon Reservoir	907.91 msl (-0.02)
Guadalupe @ Sattler	86 cfs (+11)
Comal Springs	317 cfs (+0)
San Marcos Springs	162 cfs (+1)
Guadalupe @ Gonzales	881 cfs (-28)
Guadalupe @ Victoria	1090 cfs (-300)
Coletto Reservoir	98.34 msl (-0.07)
Guadalupe @ Tivoli	2640 cfs (-50)

(+/-0.00) - indicates change in 24 hours.

Sources of Flow at Victoria

Canyon Release	7.89%
Comal Springs	29.08%
San Marcos Springs	14.86%
Natural Base Flow	48.17%

Percentages reflect sources. Losses and diversions not included.

Charts

Last 28 days at:



Preservation Matters

The Guadalupe-Blanco River Trust was founded in 2001 to conserve land in the

FOLLOW US ON

Get up-to-date information during flood events.



Canyon Lake Gorge

Within days following the Flood of 2002, the floodwaters carried a gorge into the

**GBRA**

Clean Rivers Program

The Guadalupe-Blanco River Authority (GBRA) partners with the Texas Commission on Environmental Quality (TCEQ) to administer the Clean Rivers Program (CRP) for the Guadalupe River and Lavaca-Guadalupe Coastal Basins. The Texas CRP is managed by the TCEQ and is funded entirely by fees assessed to wastewater discharge and water rights permit holders. GBRA, along with the Upper Guadalupe River Authority (UGRA), carry out the water quality management efforts in these basins under contract with the TCEQ. The Wimberley Valley Watershed Association (WVWA) contributes monitoring data collected under the Guadalupe Basin CRP quality assurance project plan from the Blanco River and Cypress Creek watersheds.

Latest News and Information

- [2010 Basin Highlights Report](#)
- [2010-2011 QAPP with Amendments 1 and 2](#)
- [2010-2011 QAPP - Amendment 2](#)
- [2010-2011 Work Plan](#)
- [2010 Basin Steering Committee Meeting Presentations](#)
- [Don't Be Clueless About Water](#)
- [Inventory of Events that May Impact Water Quality Through August 2010](#)

If you are interested in becoming involved on the Guadalupe River Basin's Clean Rivers Program Steering Committee or if you have a concern that you feel should be addressed by the Guadalupe River Basin CRP Steering Committee, please contact:

Debbie Magin
Director of Water Quality Services
933 E. Court St.
Seguin, TX 78155
(830) 379-5822
(830) 379-7478 (fax)
dmagin@gbra.org

More information on the Basin Steering Committee can be found by visiting the [Public Participation](#) page.

CRP Elements

Aside from administrative requirements, there are four major elements to the CRP:

Clean Rivers Program:

- [Overview](#)
- [Water Quality Data Collection](#)
- [Special Studies](#)
- [Basin Data Analysis](#)
- [Public Participation](#)

Monitoring Sites:

[Map of all Monitoring Sites](#)

[Blanco](#)

[Caldwell](#)

[Calhoun](#)

[Comal](#)

[DeWitt](#)

[Goliad](#)

[Gonzales](#)

[Guadalupe](#)

[Hays](#)

[Jackson](#)

[Kendall](#)

[Kerr](#)

[Victoria](#)

Water Quality:

[Regional Laboratory](#)


[Plum Creek Watershed](#)

[Geronimo Creek Watershed](#)



Water Quality

NON-POINT SOURCE POLLUTION

 PICK UP HANDSET



A Raindrop's Journey



Streets to Streams




Alex the Rapping Frog





Water Quality

NON-POINT SOURCE POLLUTION

 PICK UP HANDSET



A Raindrop's Journey



Streets to Streams




Alex the Rapping Frog





Water Quality

NON-POINT SOURCE POLLUTION

 PICK UP HANDSET



A Raindrop's Journey



Streets to Streams




Alex the Rapping Frog





Water Quality

WATERSHEDS

 PICK UP HANDSET



What is a Watershed?




What's Your Watershed Address?





Water Quality

WATERSHEDS

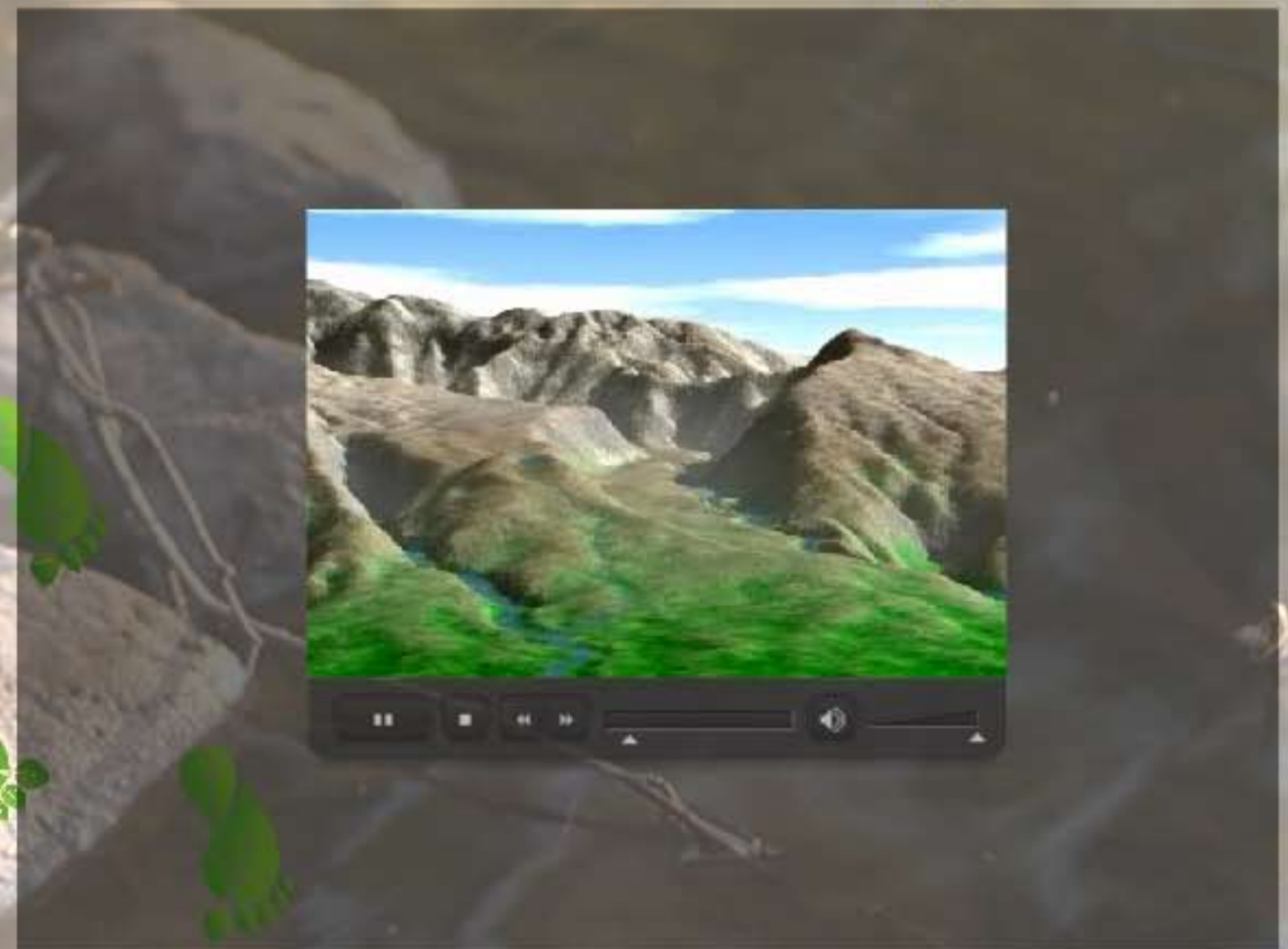
 PICK UP HANDSET



What is a Watershed?



What's Your Watershed Address?



**Taking Steps
to Preserve**



HOME

**Water
Quality**

KNOW YOUR WATERSHED: GERONIMO CREEK



**TCEQ Continuous Monitoring
Data Website**



**TX AgriLife Extension Service
Geronimo Creek Website**

Google Earth Flyover Video





TEXAS COMMISSION ON ENVIRONMENTAL QUALITY

SITE SEARCH:

please enter search phrase

SUBJECT INDEX

[Air](#) > [Water](#) > [Waste](#)[Search TCEQ Data](#)[Agency Organization Map](#)[Air Quality Maps](#)[Data Reports](#)[AutoGC](#)[Water Data](#)[Site Info](#)

Site Navigation

- [Rules, Policy & Legislation](#)
- [Permits, Licenses & Registrations](#)
- [Compliance, Enforcement & Cleanups](#)
- [Drinking Water & Water Availability](#)
- [Reporting](#)
- [Environmental Quality](#)
- [Assistance, Education & Participation](#)
- [Pollution Prevention & Recycling](#)
- [Contracts, Funding & Fees](#)
- [TCEQ Home](#)
- [About TCEQ](#)
- [Contact Us](#)

Have you had contact with the TCEQ lately? Complete our [Customer Satisfaction Survey](#).

Additional Information

[Continuous Water Quality Monitoring Stations and Data](#)[Water Monitoring Site Information](#)[Annual Summary Reports](#)[Monitoring Sites in this River Basin](#)[BACK TO:](#) [Water Quality Data](#)>> Questions or Comments: monops@tceq.state.tx.us

Geronimo Creek at SH 123

CAMS 741 Geronimo Creek at SH 123

- State: Texas
- County: Guadalupe
- City: Seguin
- Address: 7175 N State Highway 123
- Site coordinates:
 - Latitude: 29° 40' 8.80" North (+29.669111°)
 - Longitude: 97° 57' 57.08" West (-97.965856°)
 - Elevation: 165 m (541 ft)
- Maintained by: Guadalupe-Blanco River Authority

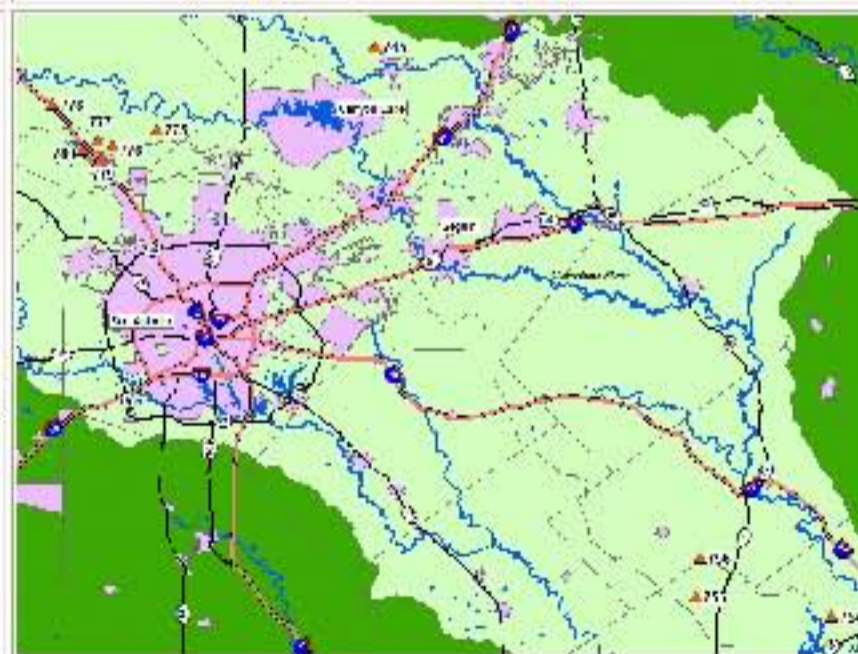
[Area Map](#)

Overall site view not available

Street-level map not available

Upstream View not available

Left Bank View not available



Right Bank View not available

Downstream View not available



Geronimo and Alligator Creeks Watershed Partnership

[Home](#)[Contact Us](#)[Project Overview](#)[Draft Plan](#)[Meetings](#)[Water Quality](#)[Publications](#)[Maps](#)[Partners](#)

Geronimo and Alligator Creeks

Geronimo Creek and its tributary Alligator Creek are located in Comal and Guadalupe Counties. The almost 70-square-mile Geronimo Creek watershed lies within the larger Guadalupe River Basin. The lower portion of the Geronimo Creek watershed is in the extra-territorial jurisdiction (ETJ) of Seguin. The upper portion of the Alligator Creek watershed lies in the ETJ of New Braunfels. Alligator Creek begins on the west side of IH-35 and flows southeast, travelling through a rapidly developing area of the Austin-San Antonio corridor.

As development and population growth continue, the percentage of urban land use will rise and play an increasingly important role in the hydrology and water quality of Geronimo Creek and its tributaries.

Based on routine water quality sampling of Geronimo Creek, the stream is impaired by elevated bacteria concentrations and has nutrient enrichment concerns for nitrate-nitrogen. High bacteria concentrations do not support contact recreation use and high levels of nitrogen can cause algal blooms and excessive growth of aquatic vegetation.

The Geronimo and Alligator Creeks Watershed Protection Planning project is a locally driven process to develop and implement a plan that will improve and protect water quality in the watershed now and into the future. Please join us by attending meetings, signing up for email updates, and telling others about this important project!



Geronimo Creek Watershed & Land Use Map (Download as PDF)





Water Quality

WASTEWATER TREATMENT SYSTEMS



Wastewater Treatment



Septic and Aerobic Systems



Fats, Oils and Grease

Wastewater Treatment

Start Tour

Roll over each of the images above to find out what it is, and click on it to get a detailed description. Click on the "start tour" button to run the show from the beginning.

Taking Steps to Preserve



Water Quality

WASTEWATER TREATMENT SYSTEMS



Wastewater Treatment



PICK UP HANDSET

Septic and Aerobic Systems



PICK UP HANDSET


Fats, Oils and Grease



HOW A SEPTIC SYSTEM WORKS



For More Info



Wastewater Source (House)

The source of wastewater is the domestic water used in homes, schools or businesses that the treatment system serves. Domestic wastewater is water discharged from plumbing fixtures, appliances, toilets, baths, laundry and the dishwasher. Wastewater is typically 99.9% liquid.

Click on the home water applications to learn their uses and misuses.

[Overview](#)

[To Septic Tank](#) [To Aerobic System](#)



Water Quality

WASTEWATER TREATMENT SYSTEMS



Wastewater Treatment



PICK UP HANDSET

Septic and Aerobic Systems



PICK UP HANDSET

Fats, Oils and Grease

