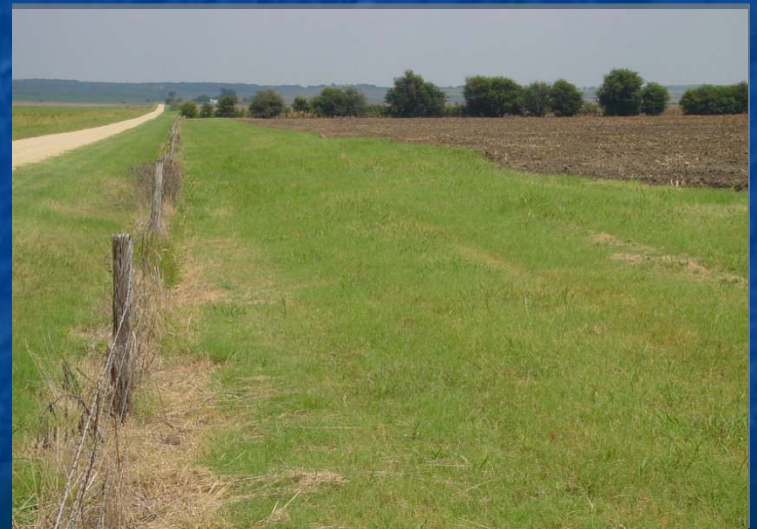


Technical Assistance and Financial Incentives for Ranchers and Farmers through Water Quality Management Plans

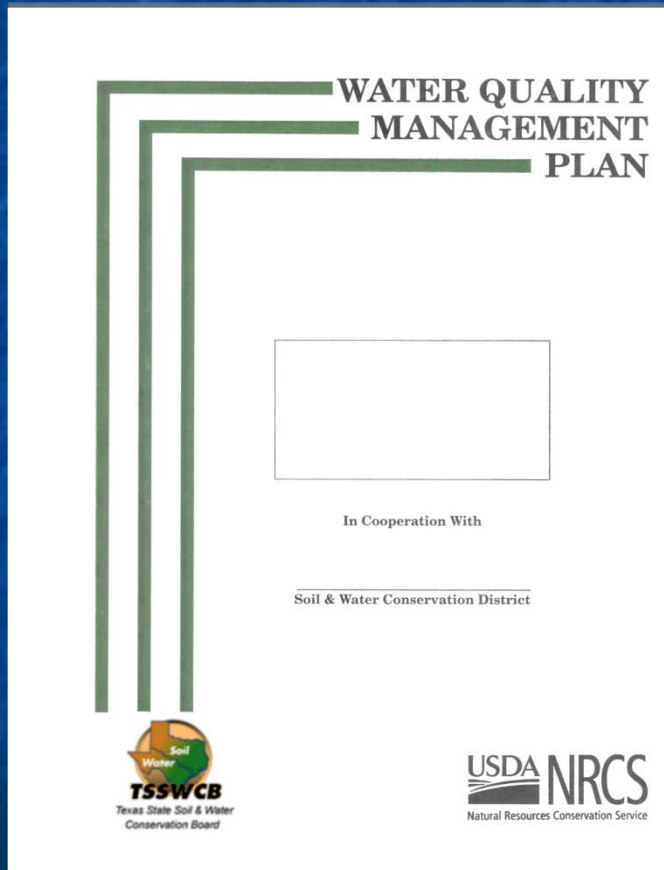


Geronimo Creek Steering Committee Meeting
February 8, 2011
Seguin, Texas

Technical Assistance and Financial Incentive

The Soil and Water Conservation District (SWCD) and the Texas State Soil and Water Conservation Board (TSSWCB) partner to provide technical assistance and financial incentives to ranchers and farmers in order to reduce bacteria and nutrients in an impaired watershed through the implementation of best management practices on agricultural lands. Through a grant from the TSSWCB, the SWCD will aid producers in the development, certification, and implementation of water quality management plans (WQMPs) on pastureland, rangeland, and cropland.

What is a Water Quality Management Plan?



- A WQMP is a site-specific plan developed through and approved by SWCDs for agricultural and silvicultural lands. The plan includes appropriate land treatment practices, production practices, management measures, technologies or combinations thereof. The purpose of a WQMP is to achieve a level of pollution prevention or abatement determined by the TSSWCB, in consultation with SWCDs, to be consistent with State Water Quality Standards.

Process for Obtaining a WQMP

1. An owner or operator of agricultural land in the impaired watershed requests planning assistance through the SWCD.
2. The SWCD Technician will provide technical assistance to individuals throughout the watershed in the development of a WQMP. There is no charge to the producer for the development of the WQMP.
3. The WQMP is agreed to by the landowner and then reviewed and certified by the TSSWCB.
4. The individual implements the WQMP on their land. A financial incentive is available from the SWCD and TSSWCB for certain practices in the WQMP.
5. The SWCD Technician will conduct annual status reviews on all WQMPs implemented throughout the watershed to ensure that the landowners implement BMPs as specified and agreed to in the WQMP implementation schedule.

Practices Eligible for Cost-Share Assistance

Examples Include:

1. Livestock Watering Facilities
2. Water Wells
3. Pipelines
4. Cross Fences
5. Riparian Herbaceous Buffers
6. Riparian Forest Buffers
7. Rangeland Planting
8. Pasture and Hayland Planting
9. Grassed Waterways
10. Field Borders
11. Filter Strips



Benefits of Participating

By partnering with the SWCD to implement a WQMP on your agricultural land, you will:

- ❖ Demonstrate that voluntary conservation programs promote agricultural production and environmental quality as compatible goals.
- ❖ Implement portions of the Watershed Protection Plan to restore water quality in our local streams and creeks.
- ❖ Demonstrate to the State of Texas that you are voluntarily using the best available technology to prevent nonpoint source water pollution and comply with State Water Quality Standards.

Benefits of Participating (Continued)

- ❖ Have a strategic plan developed for your agricultural operation to help you make decisions on how to best manage your natural resources.
- ❖ Demonstrate to other sectors in the watershed (industry, municipalities, urban residents) that agriculture is doing our part to protect our local water resources.
- ❖ Enhance the value of your operation and achieve watershed-wide environmental goals at the same time.
- ❖ Be eligible for certain forms of financial incentives to help defray costs of implementing management practices on your land.

Thank You!

Questions?

Contact Information:

B.J. Westmoreland
District Technician
Caldwell-Travis SWCD
1403-D Blackjack St.
Lockhart, TX 78644
512-398-2121 Ext. 3