

Geronimo and Alligator Creeks Watershed Partnership

Contact Information

Nikki Dictson

Texas AgriLife Extension Service
979-458-3478
979-575-4424
n-dictson@tamu.edu

Ward Ling

Texas AgriLife Extension Service
979-845-2425
wling@ag.tamu.edu

Debbie Magin

Guadalupe Blanco River Authority
830-379-5822
dmagin@gbra.org

Loren Henley

Texas State Soil and Water Conservation Board
254-773-2250 ext.240
lhenley@tsswcb.state.tx.us

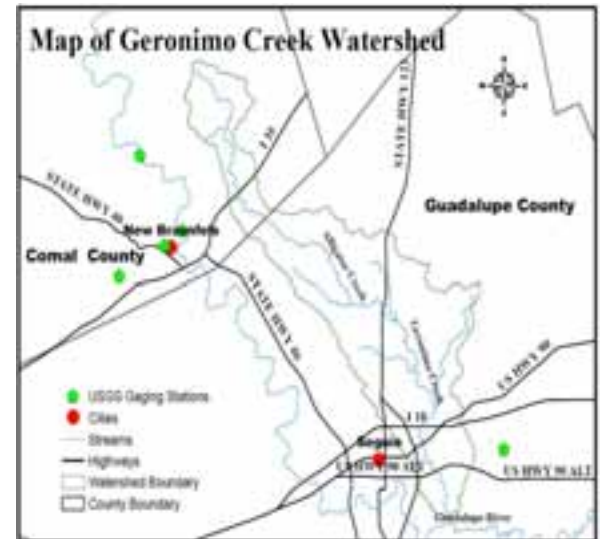
Geronimo and Alligator Creeks

Geronimo Creek and its tributary Alligator Creek are located in Comal and Guadalupe Counties. The almost 70-square-mile Geronimo Creek watershed lies within the larger Guadalupe River Basin. The lower portion of the Geronimo Creek watershed is in the extra-territorial jurisdiction (ETJ) of Seguin. The upper portion of the Alligator Creek watershed lies in the ETJ of New Braunfels. Alligator Creek begins on the west side of IH-35 and flows southeast, travelling through a rapidly developing area of the Austin-San Antonio corridor. As development and population growth continue, the percentage of urban land use will rise and play an increasingly important role in the hydrology and water quality of Geronimo Creek and its tributaries.

Based on routine water quality sampling of Geronimo Creek, the stream is impaired by elevated bacteria concentrations and has nutrient enrichment concerns for nitrate-nitrogen. High bacteria concentrations do not support contact recreation use and high levels of nitrogen can cause algal blooms and excessive growth of aquatic vegetation.

The Geronimo and Alligator Creeks Watershed Partnership

To address these concerns, the Geronimo and Alligator Creeks Watershed Partnership (Partnership), a collaboration between local citizens, cities, counties, and state and federal agencies, is being formed. The purpose of the Partnership is to develop and implement a Watershed Protection Plan (WPP). Anyone can be a member of the Partnership and participate on work groups. A Steering Committee will be formed as the decision-making body for the Partnership. Work groups will be created by the Steering Committee to address specific issues, identify and make recommendations on implementation strategies, and support development of the WPP. A Technical



Advisory Group composed of personnel from key state and federal water quality agencies will provide support and guidance.

Through a federal Clean Water Act §319(h) grant from the Texas State Soil and Water Conservation Board, the Guadalupe-Blanco River Authority (GBRA) and the Texas AgriLife Extension Service are facilitating the stakeholder process for development of the Watershed Protection Plan.



Watershed Planning is driven by local stakeholders and includes the following key tasks: 1) identify desired water quality conditions and measurable goals, 2) prioritize appropriate management practices and needed education and awareness programs to achieve those goals, 3) assist in the development of the WPP document, 4) lead implementation of the plan at the local level, and 5) communicate implications of the WPP to other interested constituents within the watershed.

Please Join the Partnership

Participation by stakeholders from throughout the watershed is essential for the planning process to be successful. Public meetings will be held in the watershed during October 2009, with the planning process getting started in January 2010. Please plan to participate in this important effort to improve and protect your water resources and encourage others to do so as well.

Stream Water Quality Issues

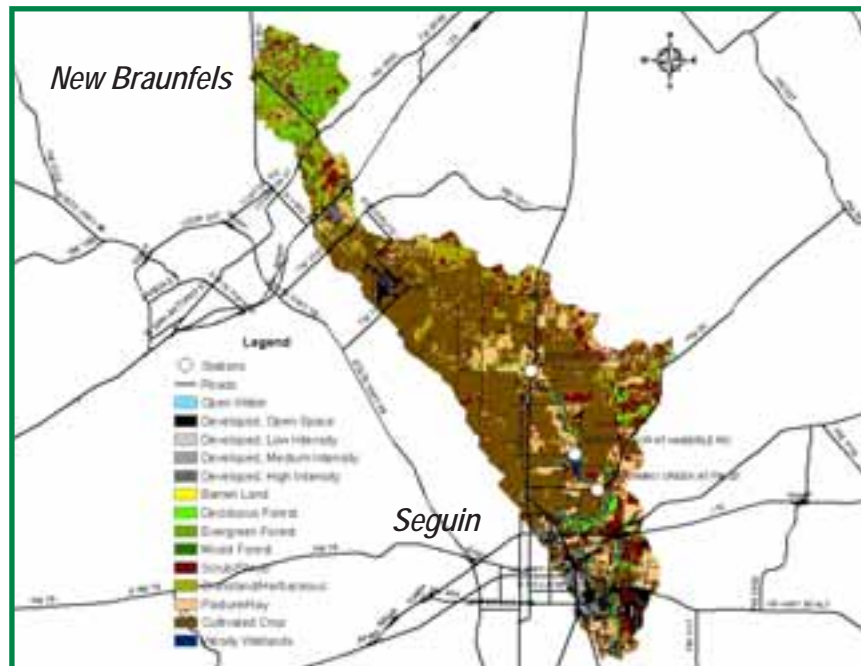
Geronimo Creek has been monitored by GBRA as part of the Clean Rivers Program since late 1996. The creek was monitored at the SH-123 crossing until August 2003, at which time the routine monitoring site was moved to the Haberle Road crossing. The new site was a past TCEQ monitoring site and an ecoregion reference site.

Six Steps of the Watershed Planning & Implementation Process

- 1) Build Partnerships
- 2) Characterize the Watershed
- 3) Finalize Goals and Identify Solutions
- 4) Design an Implementation Plan
- 5) Implement Watershed Plan
- 6) Measure Progress and Make Adjustments

The 2008 Texas Water Quality Inventory has Geronimo Creek, Segment 1804A, listed with a concern due to elevated nitrate-nitrogen concentrations because all 60 measurements exceeded the screening level of 1.95 mg/L. In addition, the stream is listed as impaired because the geometric mean for E. coli bacteria (162 organisms per 100 milliliters) exceeded the contact recreation stream standard of 126 organisms per 100 milliliters. GBRA is currently monitoring and collecting additional data at 19 sites throughout the watershed. There are three historical monitoring sites that are identified on the map below.

Geronimo Creek Watershed Land Use and Stations Map



For more information visit <http://geronimocreek.org>



Comal-Guadalupe Soil and Water Conservation District

